



## Test Report

No.: GZ1104044108/CHEM

Date: APR 20, 2011

Page 1 of 4

HAINAN JINHAI PULP & PAPER CO., LTD  
D12, YANGPU ECONOMIC DEVELOPMENT ZONE, HAINAN, CHINA

The following sample(s) was/were submitted and identified on behalf of the applicant as  
C2S ART PAPER GLOSS GRADE

SGS Job No. : SZ13068767  
SGS Internal Reference No. : 16.7  
Tested sample information : C2S ART PAPER GLOSS GRADE  
Client Reference Information : C2S ART PAPER MATT GRADE  
Date of Sample Received : APR 14, 2011  
Testing Period : APR 14, 2011 TO APR 20, 2011

Test Requested : Selected test (s) as requested by client.

Test Method : Please refer to next page(s).

Test Result(s) : Please refer to next page(s).

Signed for and on behalf of  
SGS-CSTC Ltd.

Manson Yang  
Approved Signatory

This document is issued by the Company under its General Conditions of Service printed overleaf or available on request and accessible at [http://www.sgs.com/terms\\_and\\_conditions.htm](http://www.sgs.com/terms_and_conditions.htm). Attention is drawn to the limitation of liability, indemnification and jurisdiction issues defined therein. Any holder of this document is advised that information contained hereon reflects the Company's findings at the time of its intervention only and within the limits of Client's instructions, if any. The Company's sole responsibility is to its Client and this document does not generate parties to a transaction from exercising all their rights and obligations under the transaction documents. Any unauthorized alteration, forgery or falsification of the content or appearance of this document is unlawful and offenders may be prosecuted to the fullest extent of the law.  
Unless otherwise stated, the results shown in this test report refer only to the sample(s) tested. This document cannot be reproduced except in full, without prior approval of the Company.



SGS - Standards Technical Service Co., Ltd  
Guangzhou Testing Services Center Chemical Laboratory

198 Kazhu Road, Sointech Park, Guangzhou Economic & Technology Development District, Guangzhou, China 510663 | (86-20) 82155555 | (86-20) 82075125 | www.cn.sgs.com  
中国·广州·经济技术开发区科学城科珠路198号 邮编: 510663 | (86-20) 82155555 | (86-20) 82075125 | sgs.china@sgs.com

Member of the SGS Group (SGS SA)



## Test Report

No.: GZ1104044108/CHEM

Date: APR 20, 2011

Page 2 of 4

### Test Results:

Description for specimen 1 : White paper sheet

### Phthalate(s)

Test Item(s)	Unit	Test Method (Reference)	Result	MDL
Dimethyl Phthalate (DMP)	%(w/w)	EN14372: 2004, GC-MS	N.D.	0.003
Diethyl Phthalate (DEP)	%(w/w)	EN14372: 2004, GC-MS	N.D.	0.003
Dibutyl Phthalate (DBP)	%(w/w)	EN14372: 2004, GC-MS	N.D.	0.003
Benzylbutyl Phthalate (BBP)	%(w/w)	EN14372: 2004, GC-MS	N.D.	0.003
Di-(2-ethylhexyl) Phthalate (DEHP)	%(w/w)	EN14372: 2004, GC-MS	N.D.	0.003
Diisononyl Phthalate (DINP)	%(w/w)	EN14372: 2004, GC-MS	N.D.	0.01
Di-n-octyl Phthalate (DNOP)	%(w/w)	EN14372: 2004, GC-MS	N.D.	0.003
Diisodecyl Phthalate (DIDP)	%(w/w)	EN14372: 2004, GC-MS	N.D.	0.01
Diisobutyl Phthalate (DIBP)	%(w/w)	EN14372: 2004, GC-MS	N.D.	0.003
Dinonyl Phthalate (DNP)	%(w/w)	EN14372: 2004, GC-MS	N.D.	0.003
Diisooctyl Phthalate (DIOP)	%(w/w)	EN14372: 2004, GC-MS	N.D.	0.01
Dipropyl Phthalate (DPrP)	%(w/w)	EN14372: 2004, GC-MS	N.D.	0.003
Dicyclohexyl Phthalate (DCHP)	%(w/w)	EN14372: 2004, GC-MS	N.D.	0.003
Dipentyl Phthalate (DPP)	%(w/w)	EN14372: 2004, GC-MS	N.D.	0.003
Dibenzyl Phthalate (DBzP)	%(w/w)	EN14372: 2004, GC-MS	N.D.	0.003
Diphenyl Phthalate (DPhP)	%(w/w)	EN14372: 2004, GC-MS	N.D.	0.003

### Note :

1. mg/kg = ppm, 0.1% = 1000ppm
2. N.D. = Not detected (< MDL)
3. MDL= Method Detection Limit

### For reference:

Entry 51/52 of Regulation (EC) No 552/2009 amending Annex XVII of REACH Regulation (EC) No 1907/2006 (previously restricted under Directive 2005/84/EC):

For DBP, BBP, DEHP

(1) Shall not be used as substances or in mixtures, in concentrations greater than 0,1% by weight of the plasticised material, in toys and childcare articles.

(2) Toys and childcare articles containing these phthalates in a concentration greater than 0,1% by weight of the plasticised material shall not be placed on the market.

For DINP, DNOP, DIDP

(1) Shall not be used as substances or in mixtures, in concentrations greater than 0,1% by weight of the plasticised material, in toys and childcare articles which can be placed in the mouth by children.

(2) Such toys and childcare articles containing these phthalates in a concentration greater than 0,1% by weight of the plasticised material shall not be placed on the market.

This document is issued by the Company under its General Conditions of Service printed overleaf or available on request and accessible at [http://www.sgs.com/terms\\_and\\_conditions.html](http://www.sgs.com/terms_and_conditions.html). Attention is drawn to the limitation of liability, indemnification and jurisdiction issues defined therein. Any holder of this document is advised that information contained hereon reflects the Company's findings at the time of its intervention only and within the limits of Client's instructions, if any. The Company's sole responsibility is to its Client and this document does not generate parties to a transaction from exercising all their rights and obligations under the transaction documents. Any unauthorized alteration, forgery or falsification of the content or appearance of this document is unlawful and offenders may be prosecuted to the fullest extent of the law. Unless otherwise stated, the results shown in this test report refer only to the sample(s) tested. This document cannot be reproduced except in full, without prior approval of the Company.



SGS Testing Services Co., Ltd.  
Guangzhou Environmental Chemical Laboratory

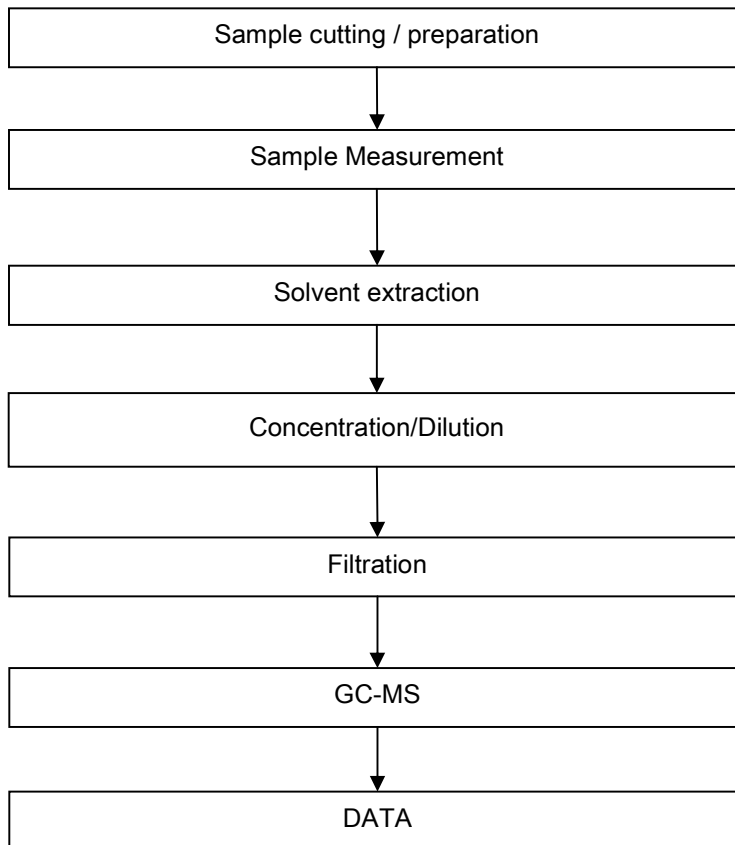
198 Kazhu Road, Sointech Park, Guangzhou Economic & Technology Development District, Guangzhou, China 510663 | (86-20) 82155555 | (86-20) 82075125 | www.cn.sgs.com  
中国·广州·经济技术开发区科学城科珠路198号 邮编: 510663 | (86-20) 82155555 | (86-20) 82075125 | sgs.china@sgs.com

Member of the SGS Group (SGS SA)

ATTACHMENTS

Phthalates Testing Flow Chart

- 1) Name of the person who made testing: Tina Zhao
- 2) Name of the person in charge of testing: Ryan Yang



This document is issued by the Company under its General Conditions of Service printed overleaf or available on request and accessible at [http://www.sgs.com/terms\\_and\\_conditions.htm](http://www.sgs.com/terms_and_conditions.htm). Attention is drawn to the limitation of liability, indemnification and jurisdiction issues defined therein. Any holder of this document is advised that information contained hereon reflects the Company's findings at the time of its intervention only and within the limits of Client's instructions, if any. The Company's sole responsibility is to its Client and this document does not generate parties to a transaction from exercising all their rights and obligations under the transaction documents. Any unauthorized alteration, forgery or falsification of the content or appearance of this document is unlawful and offenders may be prosecuted to the fullest extent of the law.



Sample photo :



SGS authenticate the photo on original report only

\*\*\* End of Report \*\*\*

This document is issued by the Company under its General Conditions of Service printed overleaf or available on request and accessible at [http://www.sgs.com/terms\\_and\\_conditions.htm](http://www.sgs.com/terms_and_conditions.htm). Attention is drawn to the limitation of liability, indemnification and jurisdiction issues defined therein. Any holder of this document is advised that information contained hereon reflects the Company's findings at the time of its intervention only and within the limits of Client's instructions, if any. The Company's sole responsibility is to its Client and this document does not generate parties to a transaction from exercising all their rights and obligations under the transaction documents. Any unauthorized alteration, forgery or falsification of the content or appearance of this document is unlawful and offenders may be prosecuted to the fullest extent of the law. Unless otherwise stated, the results shown in this test report refer only to the sample(s) tested. This document cannot be reproduced except in full, without prior approval of the Company.

